



CIRQUE X VICEROY
RESIDENCES SNOWMASS

CIRQUE X VICEROY
RESIDENCES SNOWMASS



Typical Great Room;
Views Not Representative

CirqueViceroy.com
970.924.9100



Typical Lock-Off Bedroom; Views Not Representative

Residence images are artist conceptual renderings intended solely for illustrative purposes and may not accurately represent the details of this specific residence. The specific orientation, views, window configurations, furniture, features, ceiling heights and design elements vary from home-to-home and are subject to change. Full project plans and specifications which contain all the design details of each home are available for review upon request. Square footages are approximated using the architectural method and based on architectural plans and subject to change. All residences sold furnished. Presented by Slifer Smith & Frampton Real Estate.



CIRQUE X VICEROY
RESIDENCES SNOWMASS



RESIDENCE 557+559
Two-Bedroom Including Lock-Off

Residence
557+559

FEATURES

SPECTACULAR INDOOR/OUTDOOR LIVING

- Floor-to-ceiling windows and a balcony accessible from both the great room area and primary bedroom.

SEAMLESS OPEN CONCEPT

- Fully equipped kitchen with upscale appliances and a Wolf range.
- Two-sided dine-at peninsula.
- Elegant great room oriented toward a linear gas fireplace.

TURNKEY

- Thoughtfully curated furniture and housewares package, including kitchen and bath accessories, linens, TVs and window coverings. Ready to enjoy from day one!

CHIC SLOPE-SIDE LUXURY

- Finely detailed interiors showcasing light wood flooring and millwork, natural stones, decorative porcelain tiles, blackened steel accents and specialty lighting.
- Four-fixture primary bathroom with gracious shower and enclosed washroom.

LOCK-OFF SUITE

- Flexibly planned to maximize rental options.
- Wet bar with undercounter refrigerator, microwave, sink and housewares.
- Double queen bedding plus dining/workstation banquet.
- Bathroom with gracious shower and enclosed washroom.
- Contains Communication features.

HOME MEETS HOTEL

- Impeccably designed residences paired with the luxurious amenities and services of Viceroy Snowmass. Multiple on-site restaurants, in-room dining, a year-round heated pool and spa pools, a world-class spa, a fully equipped fitness center, full-service ski valet, residential services, on-site concierge and more!



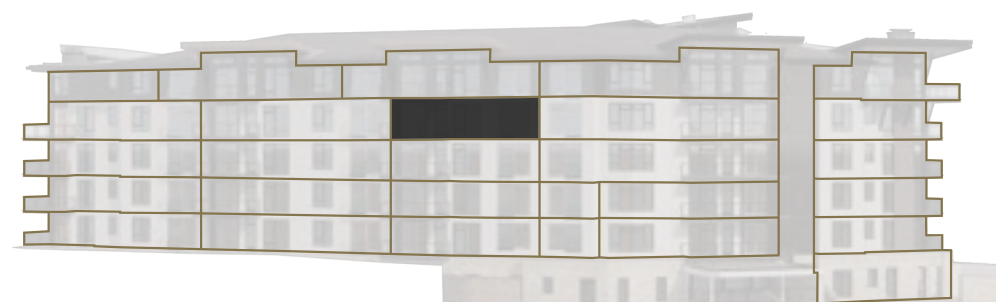
2
BEDROOMS
Including Lock-Off

2
BATHROOMS

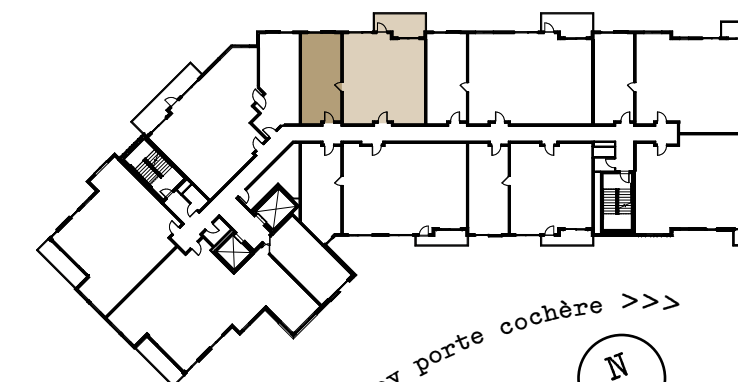
1,274
SQUARE FEET



LOCK-OFF



Mountain Side



<<< Viceroy porte cochère >>>

